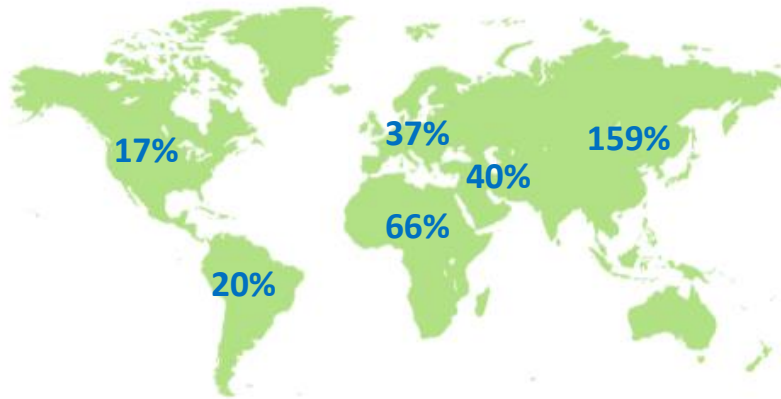


March 2023: Global outlook for an economic slowdown, the year begins with a contraction of air cargo and domestic passenger traffic in Colombia with an annual devaluation of 25%



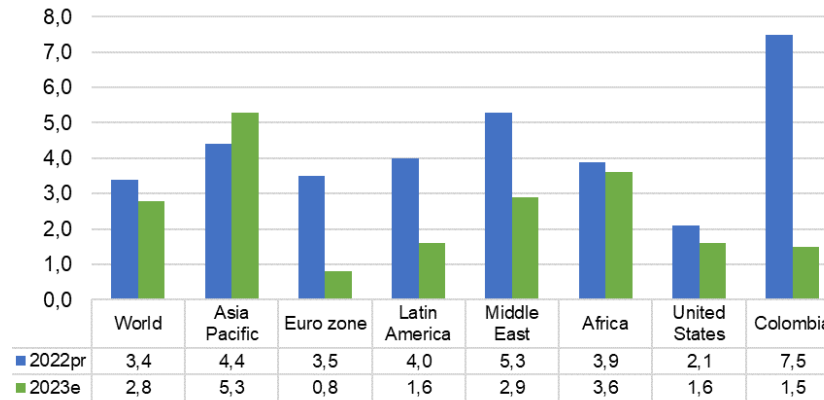
WORLD - AIR TRAFFIC PASSENGERS (RPK)

YTD Mar2023 grows 52% vs YTD Mar2022 / LF = 80,7%



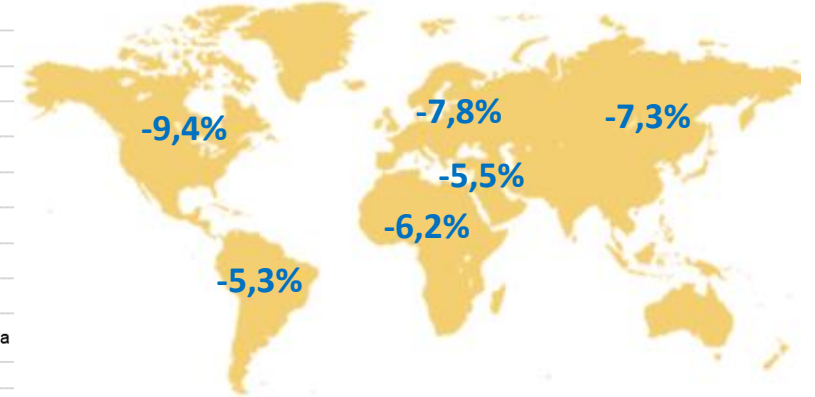
WORLD ECONOMY

World economic growth in 2023 will be lower than in 2022



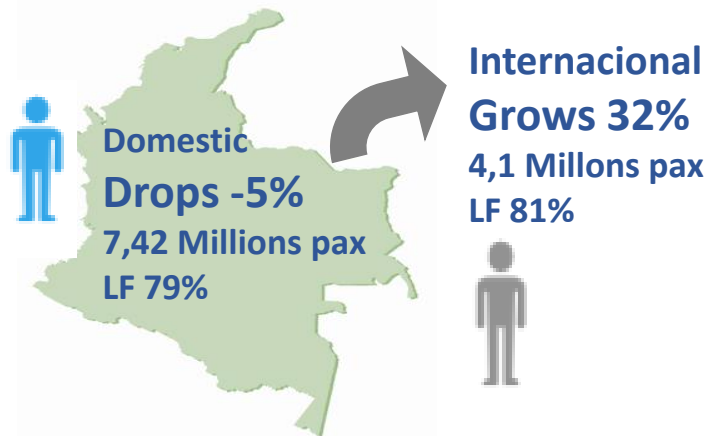
WORLD - AIR TRAFFIC CARGO (CTK)

YTD Mar2023 drops -7,7% vs YTD Mar2022



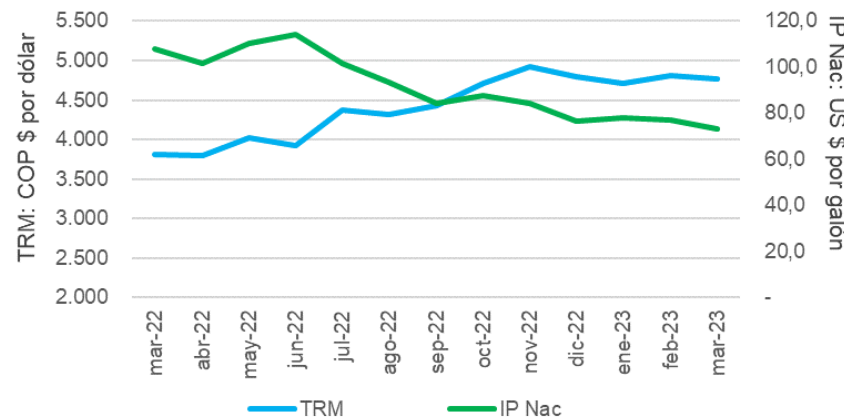
COLOMBIA - AIR TRAFFIC PASSENGERS

YTD Mar2023 grows 6% vs YTD Mar2022 / 11,5 Mill



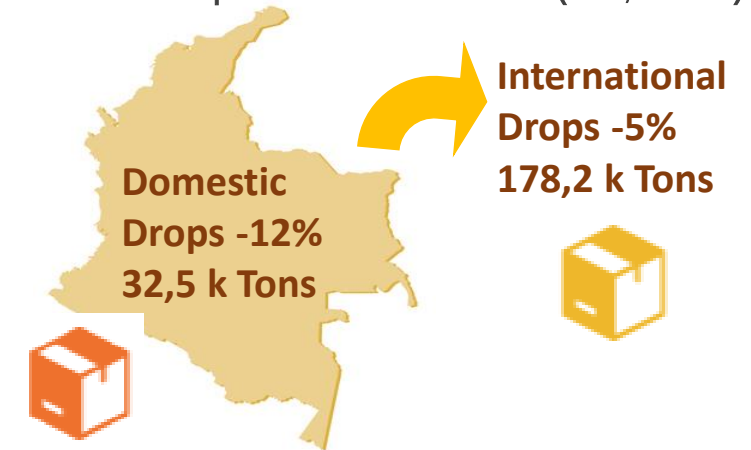
COLOMBIA: TRM and Jet Fuel (IP)

Between Mar2022 and Mar2023 Reduction of -32% in fuel and devaluation of 25.2%.



COLOMBIA - AIR CARGO TRAFFIC

YTD Mar2023 drops -6% vs YTD Mar2022 (210,7 k Ton)

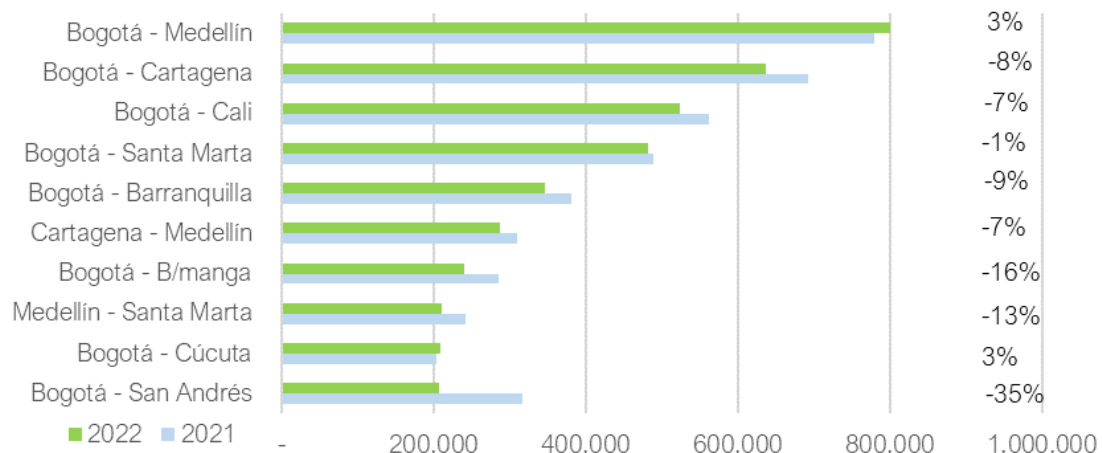


COLOMBIA 2023 vs. 2022: An Airline shutdown changes the ten main international passenger routes



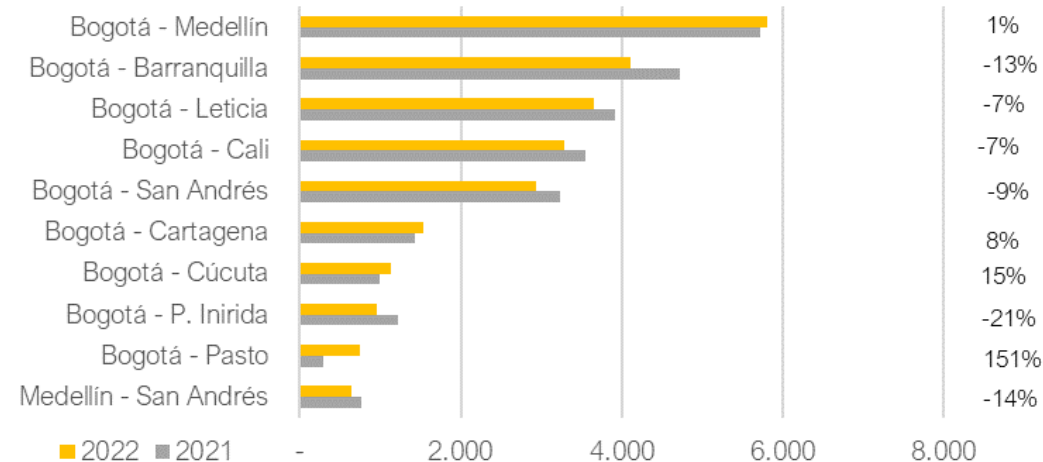
COLOMBIA PASSENGERS

Main domestic routes

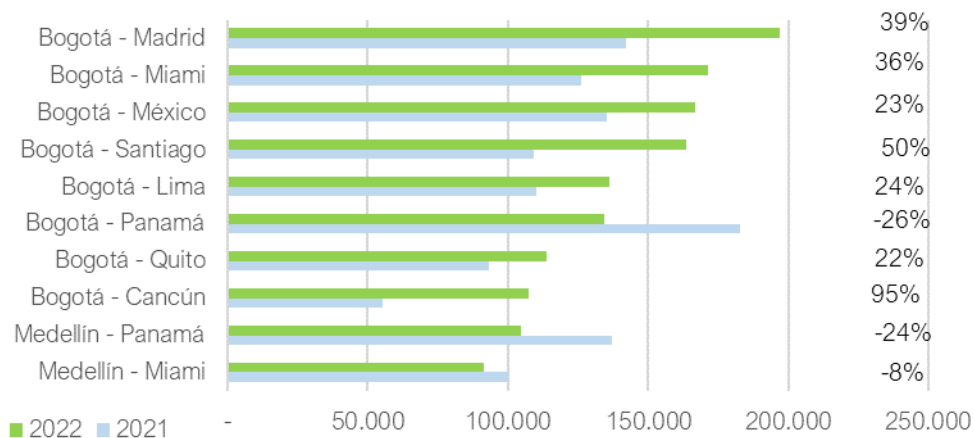


COLOMBIA CARGO (Tons)

Main domestic routes



Main international routes



Main international routes

