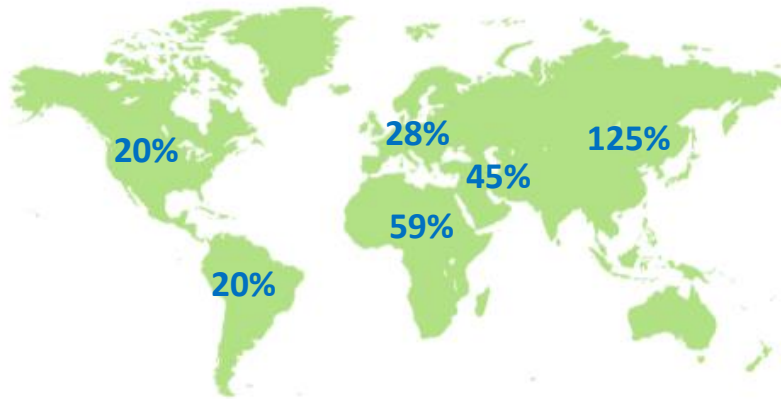


June 2023: Contraction of the domestic passenger and air cargo market in the first half of the year while macroeconomic indicators tend to normalize



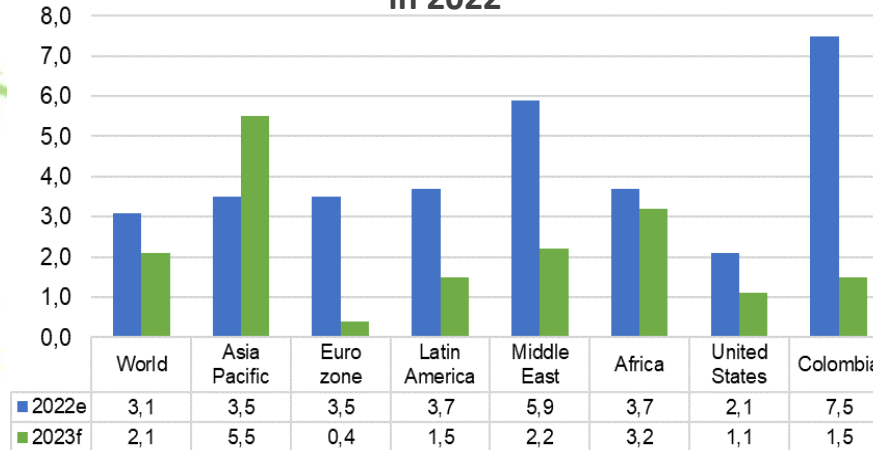
WORLD - AIR TRAFFIC PASSENGERS (RPK)

YTD Jun2023 grows 47% vs YTD Jun2022 / LF = 80,9%



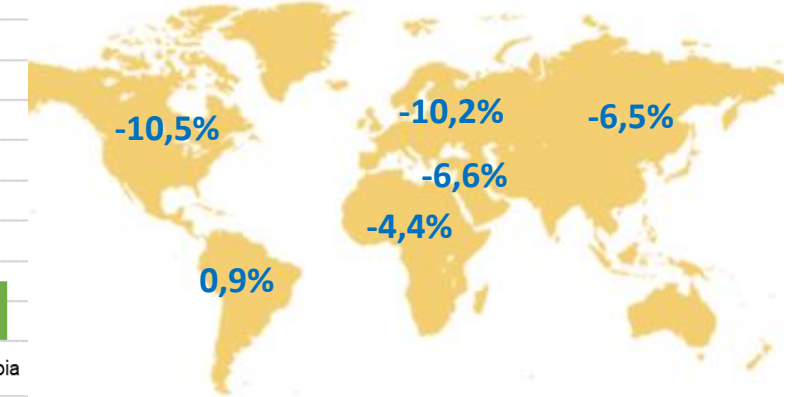
WORLD ECONOMY

World economic growth in 2023 will be lower than in 2022



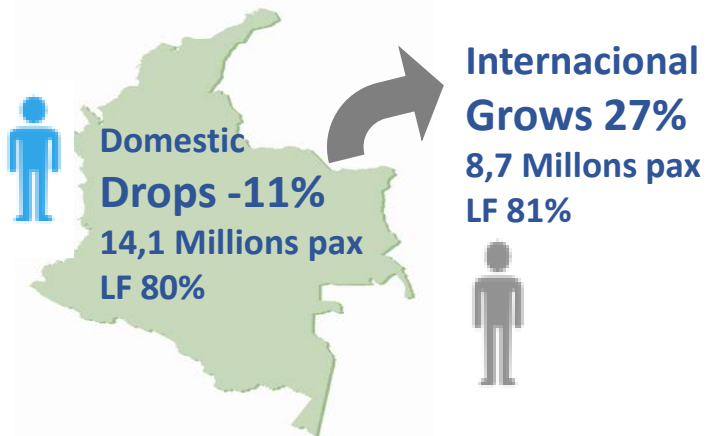
WORLD - AIR TRAFFIC CARGO (CTK)

YTD Jun2023 drops -8,1% vs YTD Jun2022



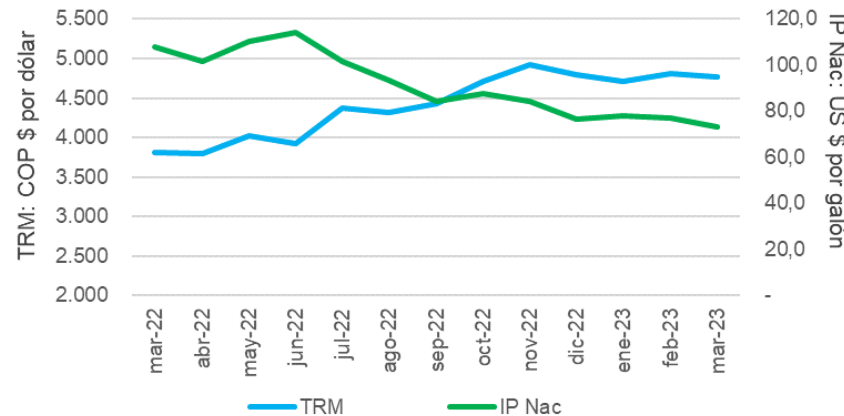
COLOMBIA - AIR TRAFFIC PASSENGERS

YTD Jun2023 grows 0,2% vs YTD Jun2022 / 22,9 Mill



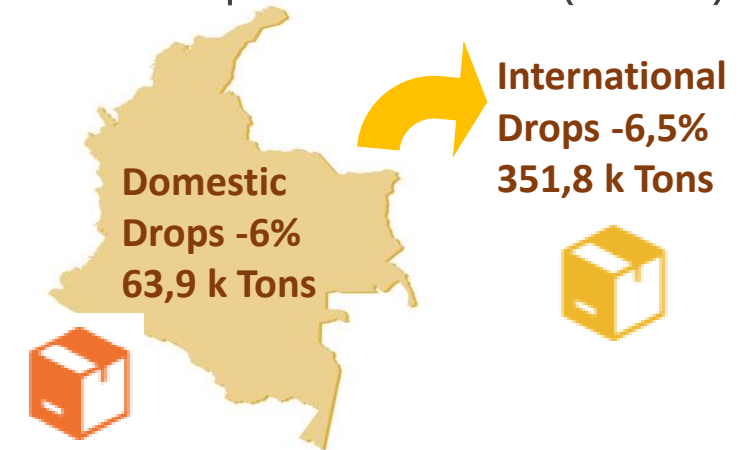
COLOMBIA: TRM and Jet Fuel (IP)

Between Jun2022 and Jun2023 Reduction of -46,3% in fuel and devaluation of 7,1%.



COLOMBIA - AIR CARGO TRAFFIC

YTD Jun2023 drops -6% vs YTD Jun2022 (415 k Ton)

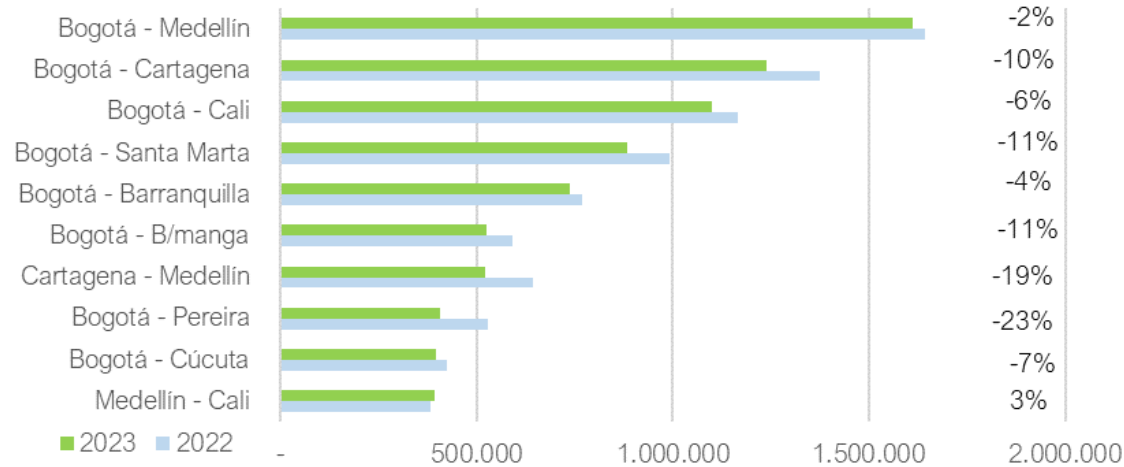


COLOMBIA 2023 vs. 2022: With the closure of two airlines, the main markets turndown



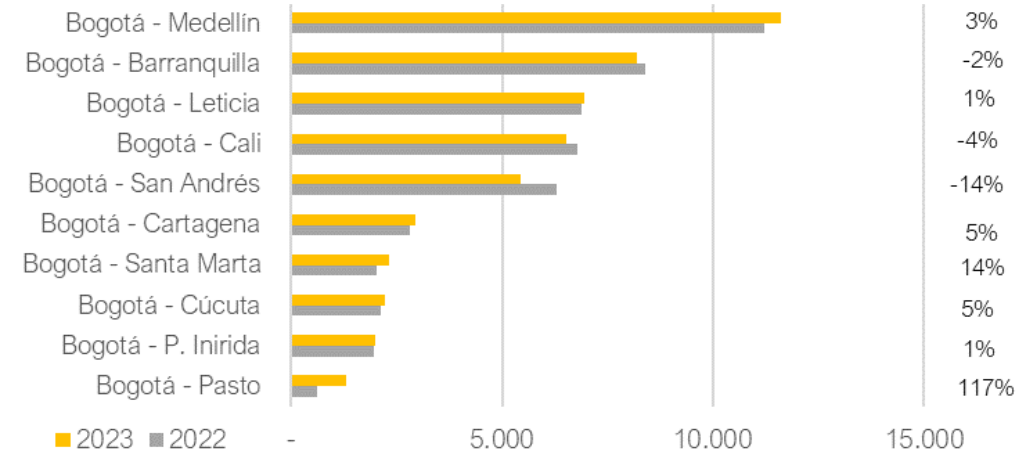
COLOMBIA PASSENGERS

Main domestic routes

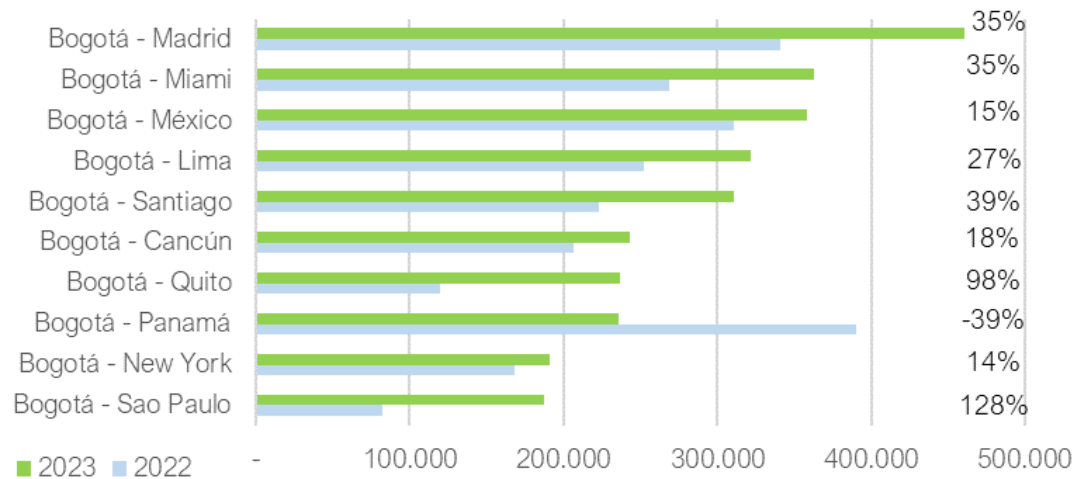


COLOMBIA CARGO (Tons)

Main domestic routes



Main international routes



Main international routes

