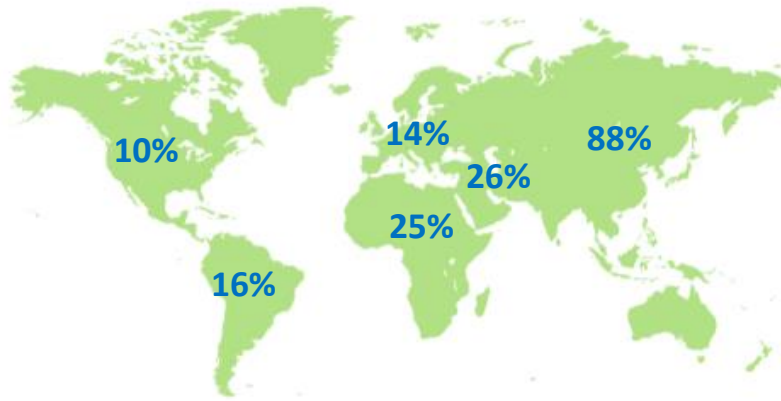


September 2023: The domestic passenger and cargo market in Colombia continues to decline as worldwide passenger traffic slows and worldwide cargo traffic picks up.



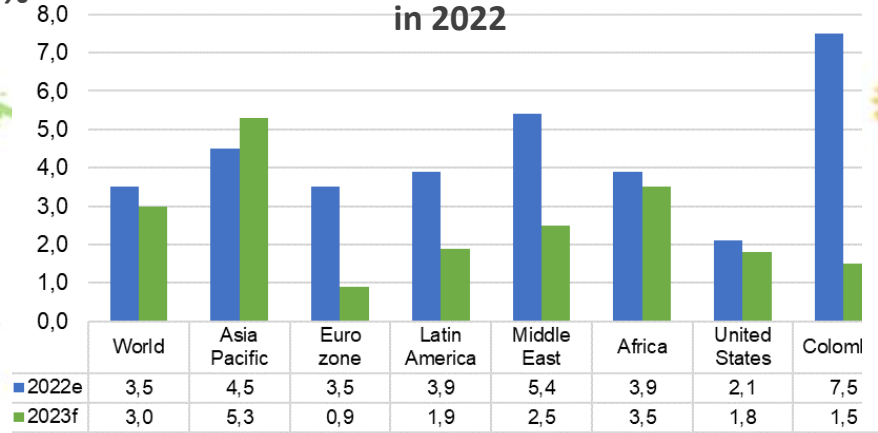
WORLD - AIR TRAFFIC PASSENGERS (RPK)

YTD Sep2023 grows 30% vs YTD Sep2022 / LF = 82,6%



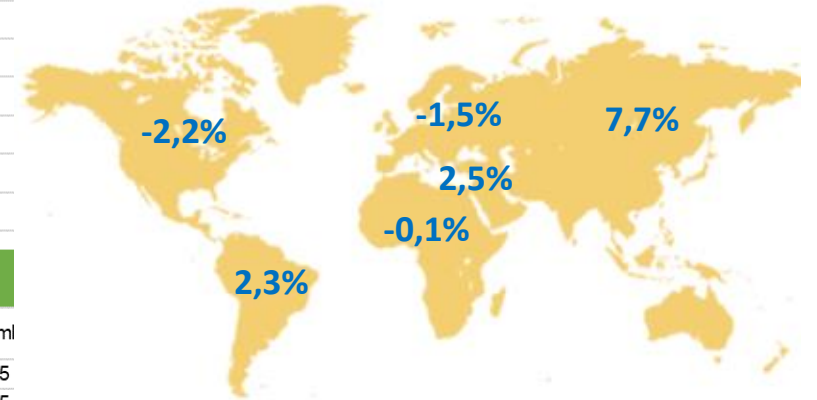
WORLD ECONOMY

World economic growth in 2023 will be lower than in 2022



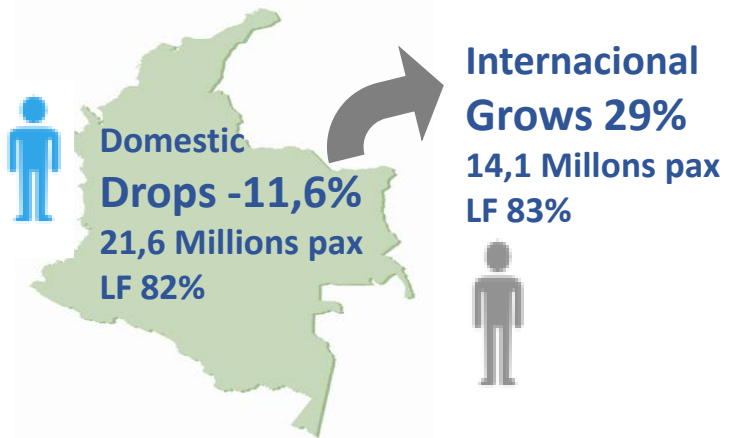
WORLD - AIR TRAFFIC CARGO (CTK)

YTD Jun2023 grows 1,9% vs YTD Sep2022



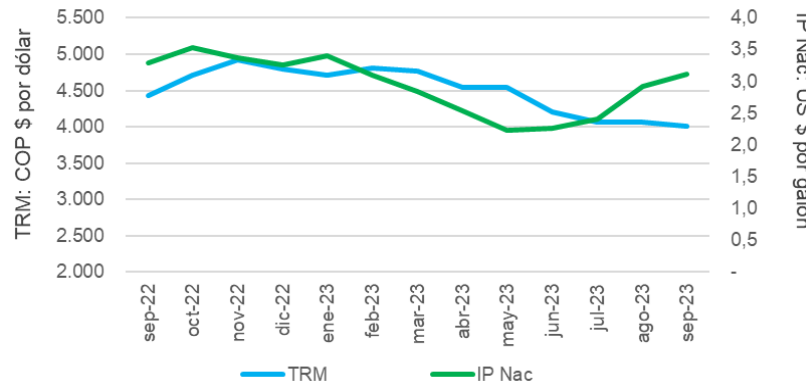
COLOMBIA - AIR TRAFFIC PASSENGERS

YTD Sep2023 grows 0,9% vs YTD Sep2022 35,8Mill



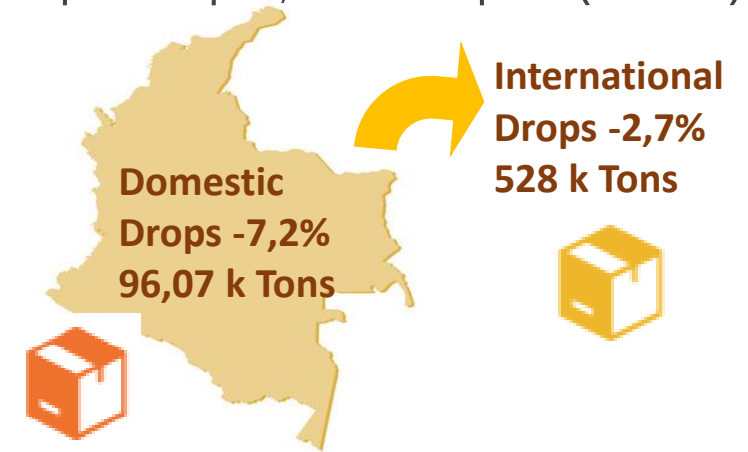
COLOMBIA: TRM and Jet Fuel (IP)

Between Sep2022 and Sep2023 Reduction of -5,2% in fuel and revaluation of -9,7%.



COLOMBIA - AIR CARGO TRAFFIC

YTD Sep2023 drops -3,4% vs YTD Sep2022 (624 k Ton)

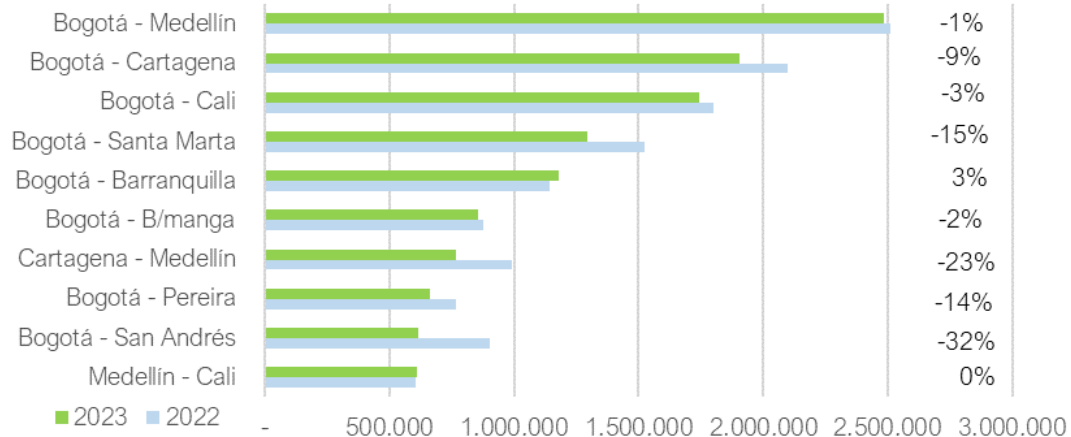


COLOMBIA 2023 vs. 2022: With the closure of two airlines, the main domestic markets turn down while most international markets grow



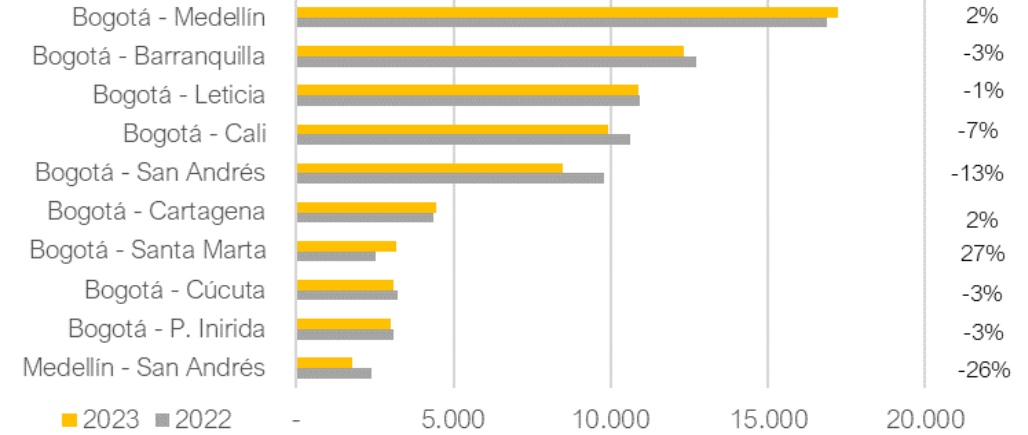
COLOMBIA PASSENGERS

Main domestic routes

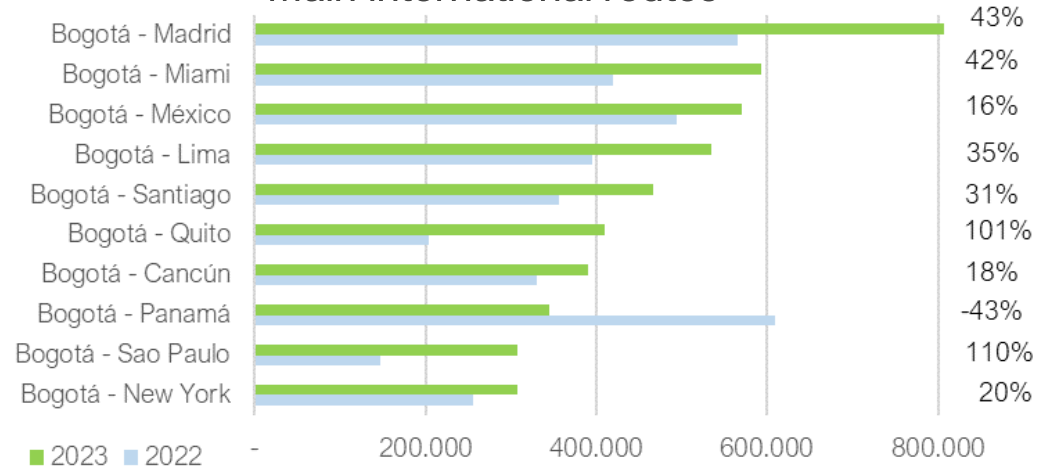


COLOMBIA CARGO (Tons)

Main domestic routes



Main international routes



Main international routes

