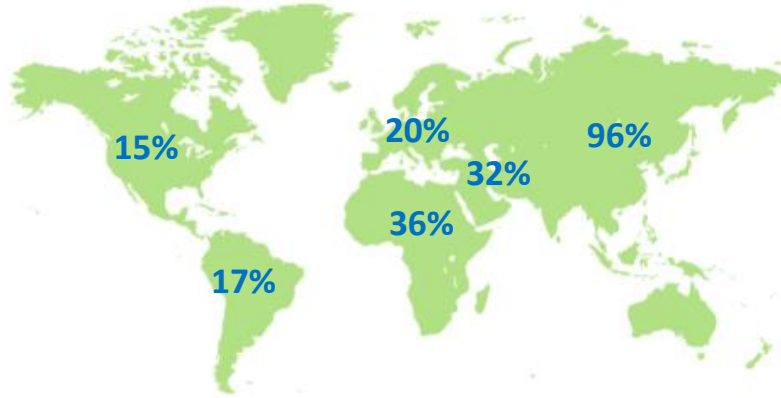


# December 2023: Air passenger traffic closed at levels like those of the 2022 thanks to the dynamics of the international market, while air cargo contracted.



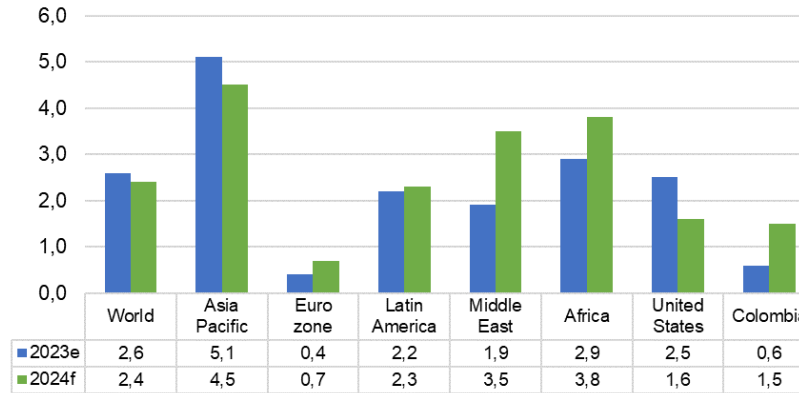
## WORLD - AIR TRAFFIC PASSENGERS (RPK)

YTD 2023 grows 36,9% vs YTD 2022 / LF = 82,3%



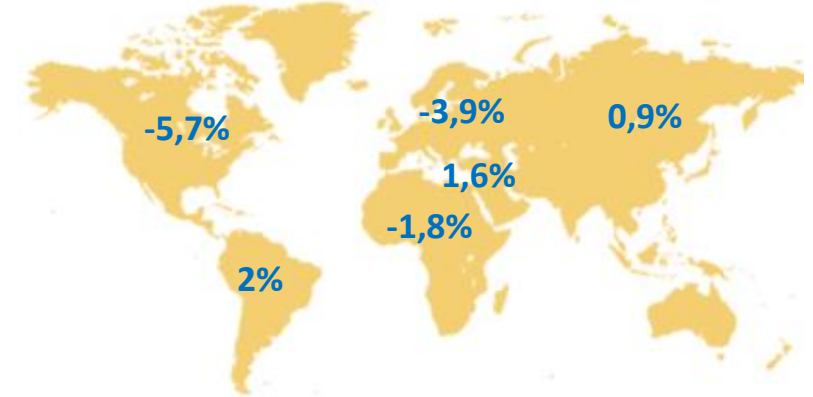
## WORLD ECONOMY

Global economic growth in 2024 will be like that of 2023



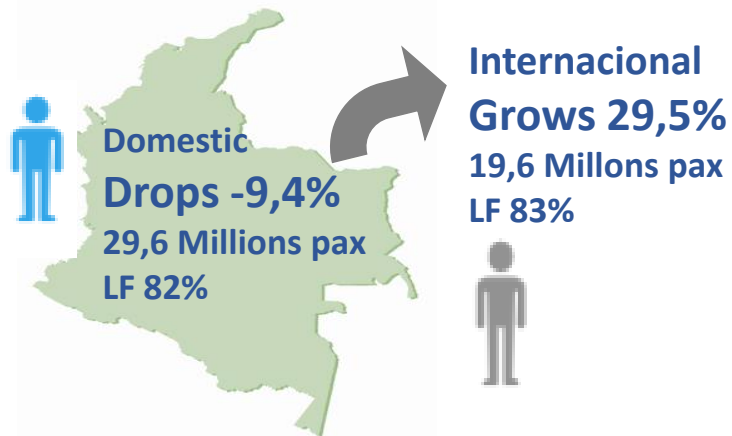
## WORLD - AIR TRAFFIC CARGO (CTK)

YTD 2023 drops -1,9% vs YTD 2022



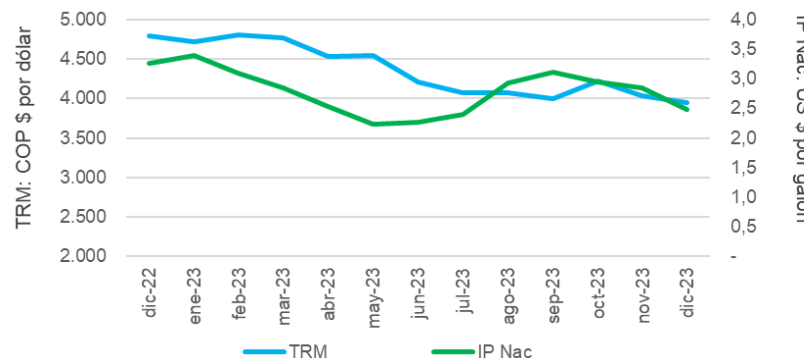
## COLOMBIA - AIR TRAFFIC PASSENGERS

YTD 2023 grows 2,9% vs YTD 2022 49,3Mill



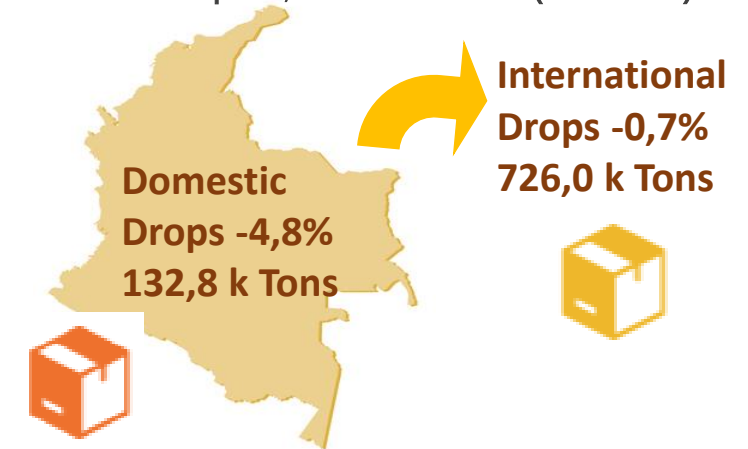
## COLOMBIA: TRM and Jet Fuel (IP)

Between 2022 and 2023 Reduction of -24% in fuel and revaluation of -17,5%.



## COLOMBIA - AIR CARGO TRAFFIC

YTD 2023 drops -1,3% vs YTD 2022 (858 k Ton)

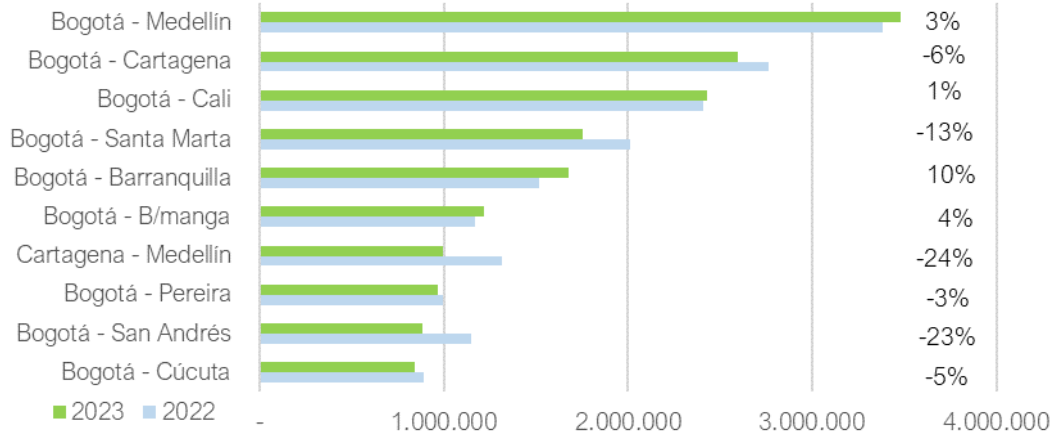


# COLOMBIA 2023 vs. 2022: With the closure of two airlines, the main domestic markets turn down while most international markets grow



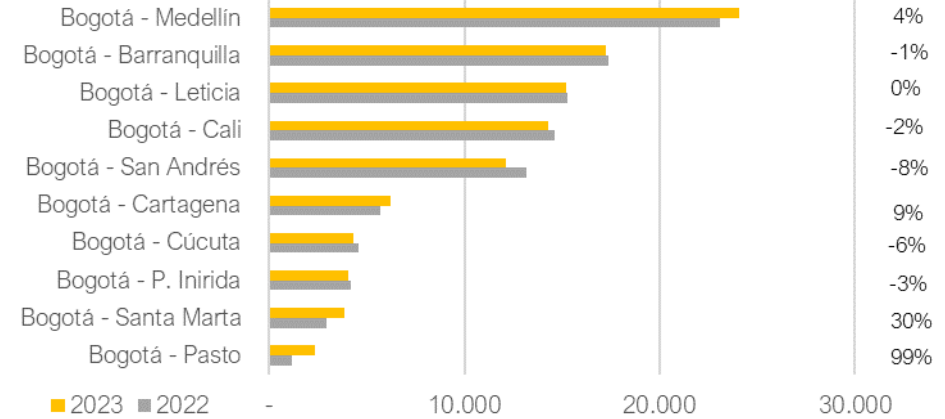
## COLOMBIA PASSENGERS

### Main domestic routes

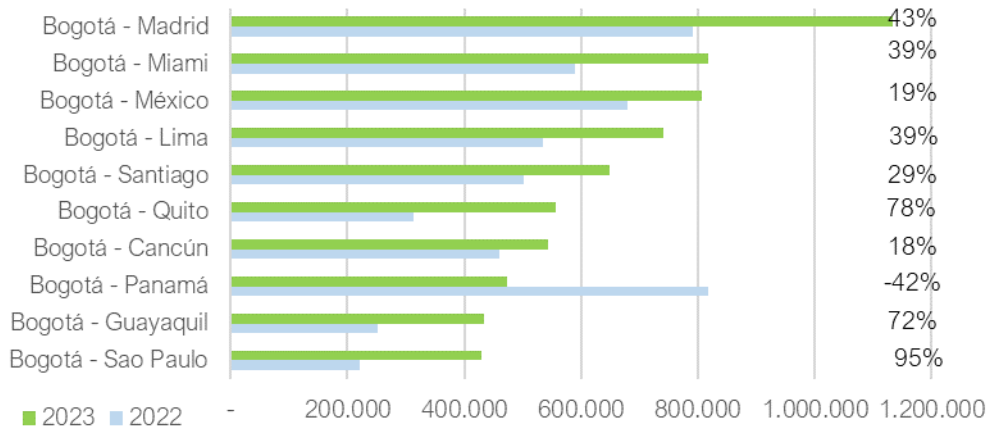


## COLOMBIA CARGO (Tons)

### Main domestic routes



### Main international routes



### Main international routes

